

Fire Report 15. August 2014

Göppingen - John-A.-Holbrook-Street No. 11

17:08 Alarm for Fire Department

17:16: Engine 1, Ladder truck and Command Car arrive (9 + 3 + 2 = 14 people)

17:17: Engine 2 arrives (additional 9 people)

Situation at arrival:

Reported basement Fire in a multi-family apartment building (picture on the right is side A - front view). Smoke can be smelled and light smoke can be seen from the entrance door and down on lower level of the stairwell where several doors (fire resistance of about 30 Minutes). One of these doors was kept open using a wooden chock. The corridor behind this door shows quite a bit of smoke. Several people have been reported to be still in the building, some of them would have difficulties in leaving the building. So to clear the building would have taken several minutes. A decision was made to keep the people in the building and use a defensive ventilation to keep smoke from the basement fire out of the stairwell during further operation.



The back side of the building (Side C) is shown in the next three pictures:



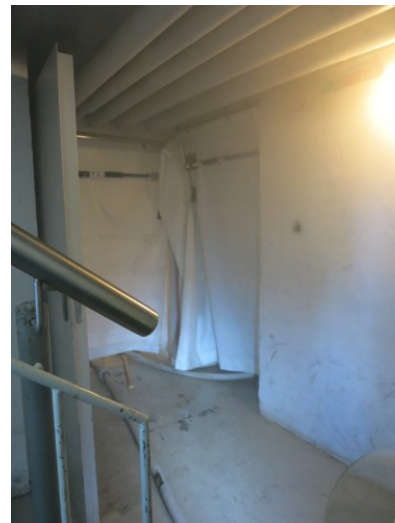
One window in the basement showed smoke coming out in a pulsing way, indicating that there is a moderate fire in the basement which is underventilated and probably some "plastic material" is involved. Several windows have been open in the apartments on Side C.



After the attack team searched in the basement corridor and did not find the seat of the fire by observation from side C it was indicated that the fire was behind another door

Installing a Smoke Blocking Device into this door frame the first attack team entered the fire compartment with a charged hose to reach the seat of the fire. In this picture the amount of smoke flowing into the stairwell without a blocking device is obvious. Two smoke blocking

devices were used in total to control the air flow in the desired direction. With their aid it was possible to divide the one big problem (a room fire next to the stairwell in a building with multiple occupants) into two smaller problems which are quite easy to handle with the available resources (staffing and material).



A second attack team was standing in the stairwell at basement level ready to support them if needed. The smoke flow into the stairwell was kept to a minimum and the attack team finished their job “behind the curtain” which protected the stairwell. Because of the small ventilation outlet and the open windows on side C the ventilation process could be performed without any pressure.

To get in and out of the fire compartment fire fighters just lifted the smoke blocking device. The damage in the fire compartment can be seen on the last two pictures below. The storage areas of two apartments were severely damaged, quite a lot of plastic and also flammable liquids have been on fire. About 10 m² of combustibile insulation material at the basement ceiling also contributed to the fire.

